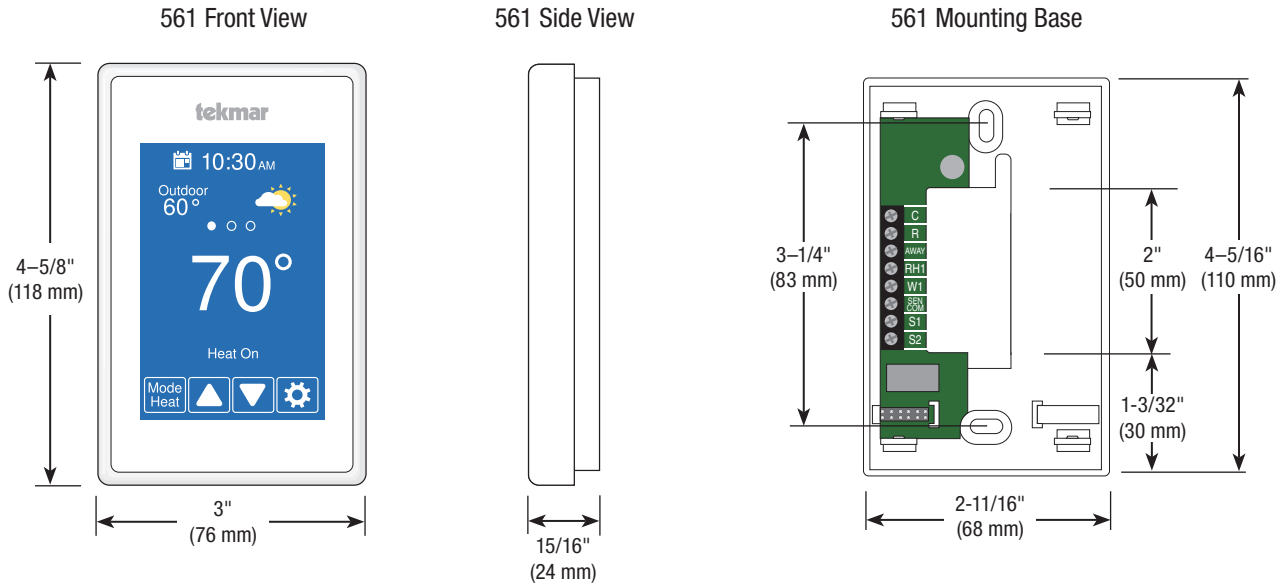


Submittal

Job _____ Designer Brian Whitehurst Contact _____

WiFi Thermostat 561

The WiFi Thermostat 561 provides precise temperature control of a one-stage heating system. When connected to the Internet, the Watts® Home mobile app allows the thermostat to be controlled remotely. A 7-day, 4-event programmable schedule is available and the early start feature automatically learns to heat up the room by the scheduled time. An Away mode is quickly and easily accessed to provide energy savings when the space is unoccupied. The thermostat supports radiant floor heating and optional floor sensors can be installed to enhance comfort and protect floor coverings.



Features

- Mobile app for iOS and Android
- Optional remote floor & room sensors
- Automatic software updates
- Outdoor temperature
- Local weather
- Error and warning notifications
- Time clock updated from Internet
- 7 day programmable schedule
- Away energy savings mode
- Early start
- Energy monitoring
- English/Français/Español languages
- 3.5" color touchscreen
- Selectable background colors

Specifications

WiFi Thermostat 561 One Stage Heat	
Literature	561_C, 561_D, 561_J, 561_U
Control	Microprocessor control. This is not a safety (limit) control
Packaged weight	0.6 lb. (270 g)
Dimensions	4-5/8" H x 3" W x 15/16" D (118 x 76 x 24 mm)
Enclosure	White PVC plastic, NEMA type 1
Approvals	Meets Class B: ICES & FCC Part 15
Ambient conditions	Indoor use only, 32 to 122°F (0 to 50°C), RH ≤90% non-condensing
Power supply	15 to 30 V (ac/dc), 2 VA, Class 2
Relay	30 V (ac/dc), 2 A, Class 2 circuits
Sensor	NTC thermistor, 10 kΩ @ 77°F (25°C ±0.2°C) β=3892
-Included	None
-Optional	tekmar type # 070, 072, 073, 076, 077, 079, 084, 087
Communications	WiFi 802.11n, 2.4 GHz, WPA2 encryption
Mobile App	Apple iOS 12 or higher, Android 8 or higher
Warranty	Limited 3 Year (See 561_D for full warranty)

Sample Application Drawing

Sample Mechanical diagram

Legend

P1 = Manifold Pump

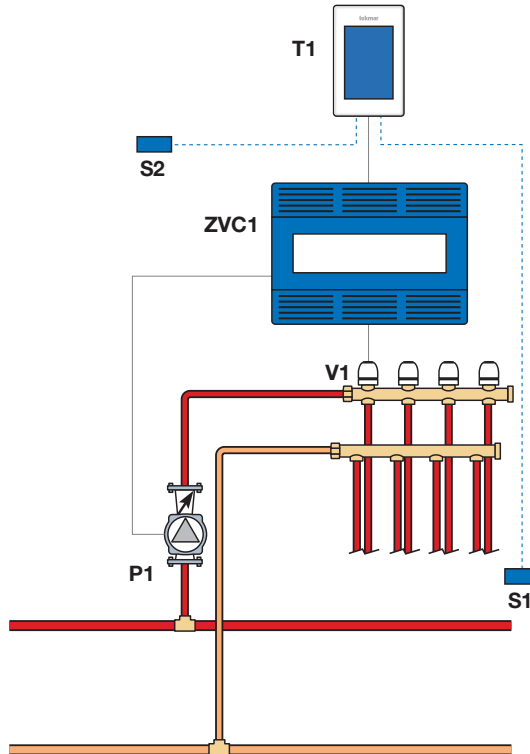
T1 = WiFi Thermostat 561

V1 = Zone Valve

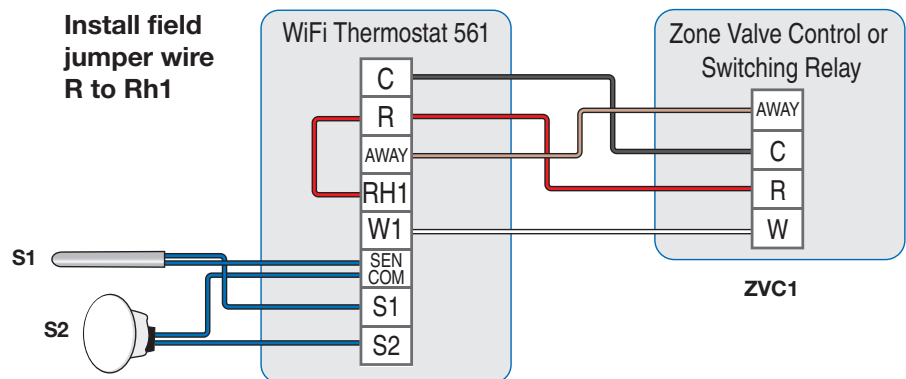
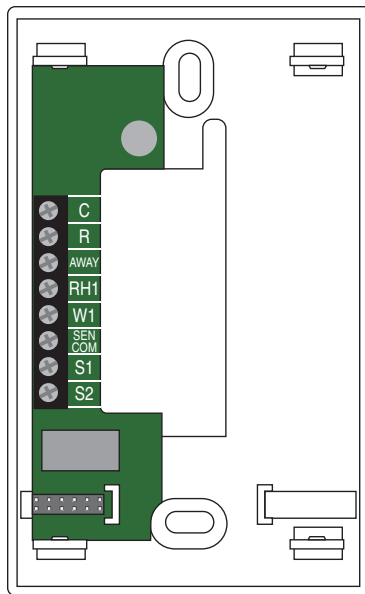
S1 = Optional Floor Sensor 079

S2 = Optional Indoor Sensor 084

ZVC1 = Zone Valve Control 303V, 304V, 305V, 306V



Sample Electrical diagram

**NOTICE**

The information contained herein is not intended to replace the full product installation and safety information available or the experience of a trained product installer. You are required to thoroughly read all installation instructions and product safety information before beginning the installation of this product.

tekmar[®]

A WATTS Brand

Tel: 1-800-438-3903 • F: (250) 984-0815

tekmarControls.com