

Permanent. Durable. Corrosion-proof.

A Quality Piping System You Can Trust.

WaterPEX™ by WATTS

A Complete System of Pipe, Valves, and
Fittings for Professional Plumbers.

Available at: 631-240-9173

PEXHEAT.COM

Trunk/Branch Plumbing

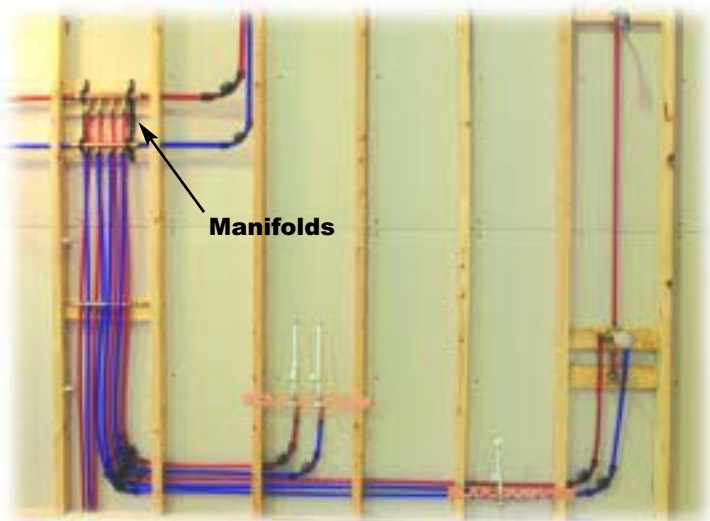
The higher material and labor cost of copper meant that most older plumbing systems used a main trunk line, with branch lines to each fixture. Quick crimp connections and flexible WaterPEX speed up installation of traditional trunk-and-branch plumbing systems.



Home Run/Manifold Plumbing Method

Take advantage of WaterPEX's lower cost using distribution manifolds to serve each fixture. Optional individual shut-off valves on each circuit ensure easy service work and customer satisfaction. Advantages include:

- Faster hot water service to each fixture
- Centralized circuit control
- Balanced water flow to each fixture
- Fewer concealed fittings



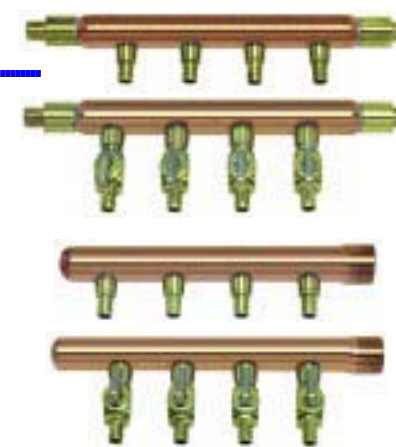
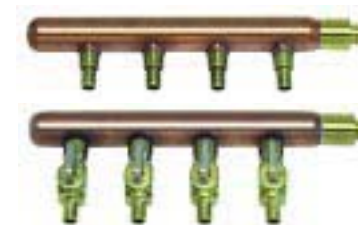
The WaterPEX Potable Water System for Professional Plumbers

WaterPEX Coils and Sticks

WaterPEX is available in 1/4", 3/8", 1/2", 3/4", and 1" sizes, in coils ranging from 100' to 1000'. 20' sticks are available in 1/2" and 3/4" sizes.

Manifolds

Copper manifolds are offered in many styles, including Flow-through, Swedged, and CustomCut. Manifolds are fitted with or without Mini Ball Valves.



Several styles of manifolds with and without Mini Ball Valves (MBVs).

Brackets, Supports, and Fasteners

All the fasteners and brackets needed for a potable system are available, including WaterPEX tubing fasteners, manifold mounting brackets, PEX bend supports, and stubout brackets.

CrimpRing Fittings

The CrimpRing series of fittings include threaded and sweat couplings, tees, elbows, and CrimpRings in 3/8", 1/2", 3/4", and 1" sizes. All fittings are brass, and manufactured to precise ASTM dimensions.

CrimpRing Tools

Our selection of tools make this the easiest potable system you'll ever install. All you need is a PEX unwinder, tubing cutter, CrimpRing tool (available in 3/8", 1/2", 3/4", and 1" sizes), and a Go/No-Go Gauge for checking connections.



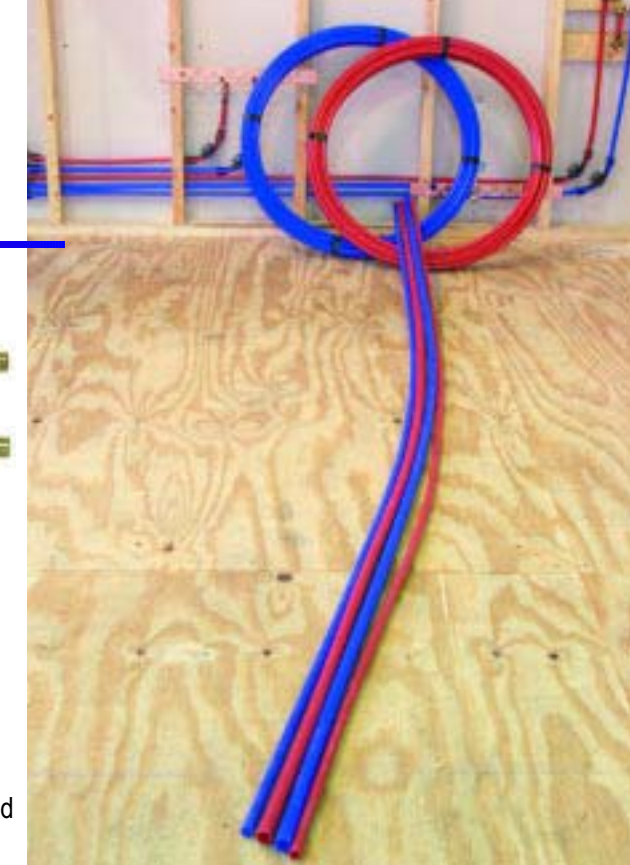
Stops and Valves

Watts Radiant offers a wide selection of 1/4-turn chrome stops — crimp, compression, and sweat. We also have full-port ball valves and tempering valves with CrimpRing fittings.

Accessories

Hammer Arrestors, Washing Machine "Water-off" valves, Icemaker Valves, space-saving Water Expansion Tanks and a variety of attractive enclosures for these devices are some of the other items in the WaterPEX product line.

For a complete product listing, consult the WaterPEX System Catalog, or visit us on line at www.wattsradiant.com.



SnapClips™, StrapDowns™, and ClipRails™



SnapClip™ fasteners

Brass elbows in multiple sizes.

Crimp x MPT fittings



Crimp x FPT fittings

Crimp x sweat fittings

Brass tees in multiple sizes.



Packaging.

WaterPEX is available in sizes from 1/4" through 1", in coils ranging from 100' to 1000'. 20' straight lengths are available in 1/2" and 3/4" sizes.

WaterPEX Tubing — Red, Blue, and White Coils

DESCRIPTION	PART NO.	EST. SHIP WT.
3/8" WaterPEX x 100' Coil, Red	P022061-100R	4.5 lbs.
3/8" WaterPEX x 500' Coil, Red	P022061-500R	23 lbs.
1/2" WaterPEX x 100' Coil, Red	P022081-100R	5.5 lbs.
1/2" WaterPEX x 500' Coil, Red	P022081-500R	24 lbs.
1/2" WaterPEX x 1000' Coil, Red	P022081-1000R	54.5 lbs.
3/4" WaterPEX x 100' Coil, Red	P022121-100R	10.5 lbs.
3/4" WaterPEX x 500' Coil, Red	P022121-500R	45 lbs.
3/4" WaterPEX x 1000' Coil, Red	P022121-1000R	106 lbs.
3/8" WaterPEX x 100' Coil, Blue	P022061-100B	4.5 lbs.
3/8" WaterPEX x 500' Coil, Blue	P022061-500B	23 lbs.
1/2" WaterPEX x 100' Coil, Blue	P022081-100B	5.5 lbs.
1/2" WaterPEX x 500' Coil, Blue	P022081-500B	24 lbs.
1/2" WaterPEX x 1000' Coil, Blue	P022081-1000B	54.5 lbs.
3/4" WaterPEX x 100' Coil, Blue	P022121-100B	10.5 lbs.
3/4" WaterPEX x 500' Coil, Blue	P022121-500B	45 lbs.
3/4" WaterPEX x 1000' Coil, Blue	P022121-1000B	106 lbs.
1/4" WaterPEX x 100' Coil, White	P022041-100W	4.5 lbs.
3/8" WaterPEX x 100' Coil, White	P022061-100W	4.5 lbs.
3/8" WaterPEX x 500' Coil, White	P022061-500W	23 lbs.
1/2" WaterPEX x 100' Coil, White	P022081-100W	5.5 lbs.
1/2" WaterPEX x 500' Coil, White	P022081-500W	24 lbs.
1/2" WaterPEX x 1000' Coil, White	P022081-1000W	54.5 lbs.
3/4" WaterPEX x 100' Coil, White	P022121-100W	10.5 lbs.
3/4" WaterPEX x 500' Coil, White	P022121-500W	45 lbs.
3/4" WaterPEX x 1000' Coil, White	P022121-1000W	106 lbs.
1" WaterPEX x 100' Coil, White	P022161-100W	17.5 lbs.
1" WaterPEX x 500' Coil, White	P022161-500W	90 lbs.

WaterPEX Tubing Red, Blue, and White 20' Sticks

DESCRIPTION	PART NO.	EST. SHIP WT.
1/2" WaterPEX x 20' Stick, Bundle of 50 Sticks, Red	P022081-20R	54.5 lbs.
3/4" WaterPEX x 20' Stick, Bundle of 25 Sticks, Red	P022121-20R	45 lbs.
1/2" WaterPEX x 20' Stick, Bundle of 50 Sticks, Blue	P022081-20B	54.5 lbs.
3/4" WaterPEX x 20' Stick, Bundle of 25 Sticks, Blue	P022121-20B	45 lbs.
1/2" WaterPEX x 20' Stick, Bundle of 50 Sticks, White	P022081-20W	54.5 lbs.
3/4" WaterPEX x 20' Stick, Bundle of 25 Sticks, White	P022121-20W	45 lbs.

WaterPEX
Watts Potable Plumbing System

WaterPEX Flow Characteristics at 60°F:

Flow (GPM)	3/8" Tubing		1/2" Tubing		3/4" Tubing		1" Tubing	
	Press. Drop psi/100'	Velocity* ft./sec.	Press. Drop psi/100'	Velocity* ft./sec.	Press. Drop psi/100'	Velocity* ft./sec.	Press. Drop psi/100'	Velocity* ft./sec.
1	7.3	3.2	1.8	1.7	WATER VELOCITY TOO LOW			
2	24.5	6.3	5.9	3.5	1.2	1.8	0.4	1.0
3			12.1	5.2	2.4	2.7	0.7	1.6
4			20.1	7.0	4.0	3.5	1.2	2.1
5					5.7	4.4	1.8	2.7
6					8.1	5.3	2.5	3.2
7					10.7	6.2	3.2	3.7
8					13.5	7.1	4.1	4.3
9							5.0	4.8
10							6.0	5.3

*Rounded to the first decimal

Standards and Approvals.

WaterPEX is manufactured in accordance with American Standard Testing Methods F-876 and F-877 to SDR-9 dimensional standards. It is listed by the National Sanitation Foundation NSF-61 for use in potable water systems. WaterPEX labeled "NSF CL-R" meets the requirements for use in chlorinated domestic continuous recirculation systems. WaterPEX is also listed by the International Conference of Building Officials (ICBO), the International Association of Plumbing and Mechanical Officials (IAPMO) and carries the Uniform Plumbing Code symbol. WaterPEX is tested and certified to the Canadian Standard Association (CSA) standard B137.5.



In the United States:



3131 W. Chestnut Expwy.
Springfield, MO 65802
1-800-276-2419 toll-free phone
417-864-6108 phone
417-864-8161 fax
www.wattsradiant.com

In Canada:

Watts Industries-Canada
5435 North Service Road
Burlington, ON L7L 5H7
1-888-208-8927 toll-free phone
905-332-4090 phone
1-888-882-1979 toll-free fax
905-332-7068 fax
www.wattscda.com

Available at: 631-240-9173

PEXHEAT.COM

WaterPEX
Watts Potable Plumbing System

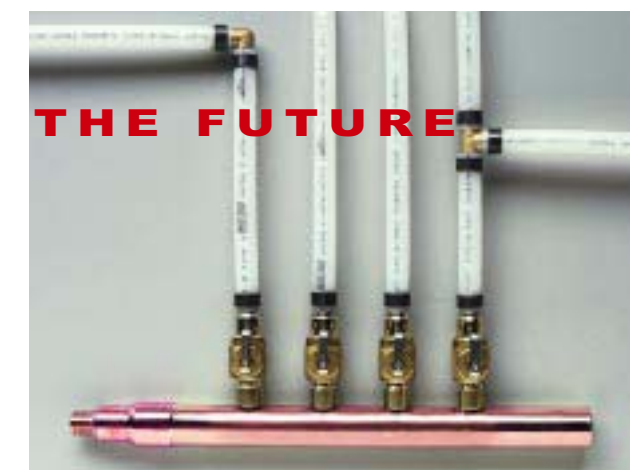


The future of plumbing systems is **WaterPEX.**

Watts means water. With 125 years of experience in plumbing and heating, you can count on Watts to deliver quality. Save labor and fittings with WaterPEX. The CrimpRing insert fitting system is the fastest and safest way to permanently install plumbing. If you're already using PEX, but have never tried the CrimpRing system, you'll be amazed at how much faster it is than the old-style PEX expansion systems. Dry fit the insert fittings for fit and appearance, and then crimp into place in seconds. You can immediately pressure test connections; no need to wait until the next day.



VS.



Less is more.

Finished assemblies are made without glues, solvents, or applied heat. Assembly is clean, safe, and swift. The Watts system is simple and reliable.

WaterPEX Pipe is:

Easy to Install.

Tough, flexible, and corrosion proof, WaterPEX is much lighter than copper. WaterPEX is available in long coils, which means fewer joints and fittings to install. It can be run overhead or under a slab.

Clean and Safe.

WaterPEX won't leach copper, lead, or solvents into drinking water. WaterPEX and fittings carry the NSF certification for drinking water.

Smooth and Quiet.

The smooth interior of WaterPEX means that water flows quickly and quietly to fixtures with less noise and more pressure at the tap.

CrimpRing Fittings Offer:

The Dry-Fit Advantage.

"Rough in" the entire system, check it out for fit and appearance, then crimp each connection for permanence.

Quick and Reliable Connections.

CrimpRing connections are NSF-listed brass inserts with pure copper fastening rings. When crimped with a simple hand tool, these connections form a fast, reliable, and permanent seal.

Immediate Pressure Testing.

After crimping, you can immediately test each fitting . . . to well over 100 psi. No need to wait hours for connections to set and seal.

The Simplicity of the CrimpRing Connection:

